

YUNPEN USA

YO-T1, YO-T3 SERIES

1. FEATURES

- Snap-in mojting type for saving more labor cost
- Low cost
- 250 Fasten terminals (YO-T1)
- Solder lug terminals (YO-T3)
- All parts are approved by **UL, CSA** and **VDE**.



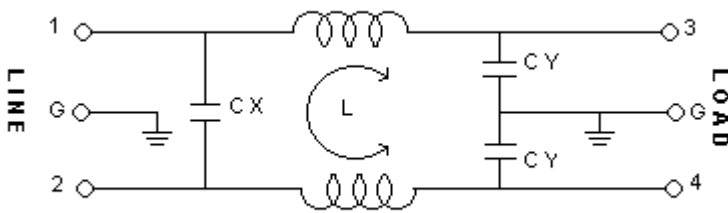
2. SPECIFICATIONS

ITEM \ MODEL		YO01T1/YO01T3	YO03T1/YO03T3	YO06T1/YO06T3	YO10T1/YO10T3
RATED VOLTAGE		250V AC	250V AC	250V AC	250V AC
RATED CURRENT		1A	3A	6A	10A
LEAK CURRENT		0.8mA MAX 250V,50HZ	0.8mA MAX 250V,50HZ	0.8mA MAX 250V,50HZ	0.8mA MAX 250V,50HZ
TEST VOLTAGE	LINE TO LINE	1450V DC	1450V DC	1450V DC	1450V DC
	LINE TO GROUND				
INSULATION RESISTANCE		100M ohm MIN 250VDC	100M ohm MIN 250VDC	100M ohm MIN 250VDC	100M ohm MIN 250VDC
DIRECT CURRENT RESISTANCE		0.5 ohm MAX	0.2 ohm MAX	0.15 ohm MAX	0.1 ohm MAX
TEMPERATURE RISE		30C MAX	30C MAX	30C MAX	30C MAX
OPERATING TEMPERATURE		-25 ~ +85C	-25 ~ +85C	-25 ~ +85C	-25 ~ +85C
ATTENUATION	NORMAL MODE 25dbMIN	0.60 ~ 45MHZ	0.80 ~ 50MHZ	0.80 ~ 50MHZ	1.00 ~ 50MHZ
	COMMON MODE 25dbMIN	0.10 ~ 40MHZ	0.20 ~ 50MHZ	0.40 ~ 50MHZ	1.00 ~ 50MHZ
CX		0.1uF	0.1uF	0.1uF	0.1uF
CY		3300pF*2	3300pF*2	3300pF*2	3300pF*2
INDUCTANCE		3.7mH*2	1.8mH*2	0.7mH*2	0.3mH*2

3. NOISE ATTENUATION (dB)

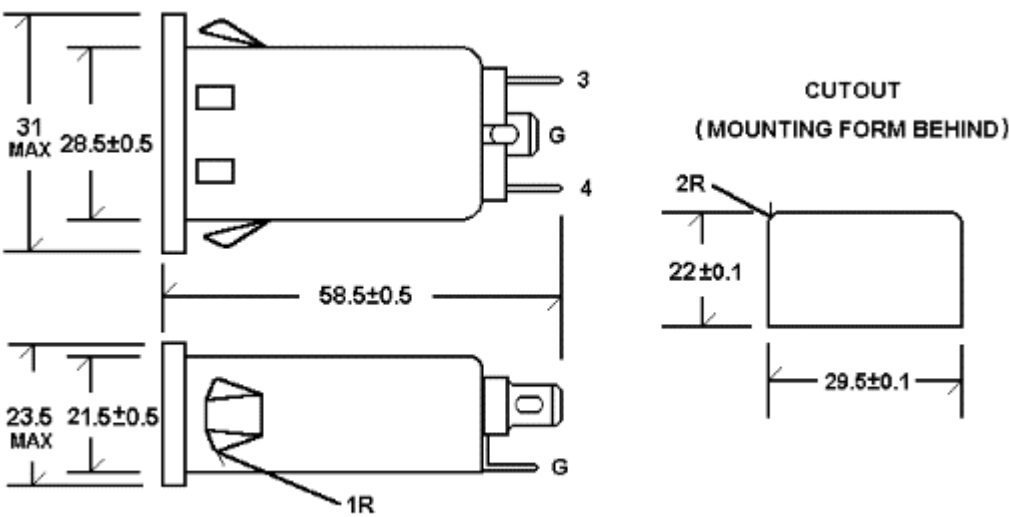
COMMON MODE (LINE TO GROUND) IN 50 OHM SYSTEM							
TYPE	CURRENT	FREQUENCY-MHZ					
	RATING	0.15	0.5	1.0	5.0	10.0	30.0
YO01T1/YO01T3	1A	26	32	35	41	42	43
YO03T1/YO03T3	3A	21	27	33	41	43	40
YO06T1/YO06T3	6A	14	22	26	39	43	44
YO10T1/YO10T3	10A	5	15	19	33	39	43
DIFFERENTIAL MODE (LINE TO LINE) IN 50 OHM SYSTEM							
YO01T1/YO01T3	1A	9	19	23	44	45	42
YO03T1/YO03T3	3A	8	17	21	44	44	38
YO06T1/YO06T3	6A	6	16	21	38	42	43
YO10T1/YO10T3	10A	4	14	18	34	42	36

4. CIRCUIT



5. DIMENSION(mm)

YO01T1~YO10T1



YO01T3~YO10T3

