

YUNPEN USA

YO-A1, YO-A3 SERIES

1. FEATURES

- Snap-in mounting type for saving more labor cost
- Low cost
- 250 Fasten terminals (YO-A1)
- Solder lug terminals (YO-A3)
- All parts are approved by **UL, CSA** and **VDE**



YO-A1



YO-A3

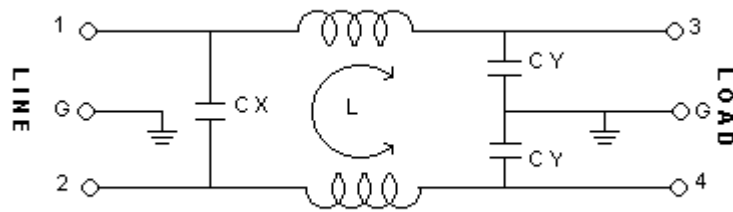
2. SPECIFICATIONS

ITEM \ MODEL		YO01A1/YO01A3	YO03A1/YO03A3	YO06A1/YO06A3	YO10A1/YO10A3
RATED VOLTAGE		250V AC	250V AC	250V AC	250V AC
RATED CURRENT		1A	3A	6A	10A
LEAK CURRENT		0.8mA MAX 250V,50HZ	0.8mA MAX 250V,50HZ	0.8mA MAX 250V,50HZ	0.8mA MAX 250V,50HZ
TEST VOLTAGE	LINE TO LINE	1450V DC	1450V DC	1450V DC	1450V DC
	LINE TO GROUND	2250V DC	2250V DC	2250V DC	2250V DC
INSULATION RESISTANCE		100M ohm MIN 250VDC	100M ohm MIN 250VDC	100M ohm MIN 250VDC	100M ohm MIN 250VDC
DIRECT CURRENT RESISTANCE		0.5 ohm MAX	0.2 ohm MAX	0.15 ohm MAX	0.1 ohm MAX
TEMPERATURE RISE		30C MAX	30C MAX	30C MAX	30C MAX
OPERATING TEMPERATURE		-25 ~ +85C	-25 ~ +85C	-25 ~ +85C	-25 ~ +85C
ATTENUATION	NORMAL MODE 25dbMIN	0.60 ~ 45MHZ	0.80 ~ 50MHZ	0.80 ~ 50MHZ	1.00 ~ 50MHZ
	COMMON MODE 25dbMIN	0.10 ~ 40MHZ	0.20 ~ 50MHZ	0.40 ~ 50MHZ	1.00 ~ 50MHZ
CX		0.1uF	0.1uF	0.1uF	0.1uF
CY		3300pF*2	3300pF*2	3300pF*2	3300pF*2
INDUCTANCE		3.7mH*2	1.8mH*2	0.7mH*2	0.3mH*2

3. NOISE ATTENUATION (dB)

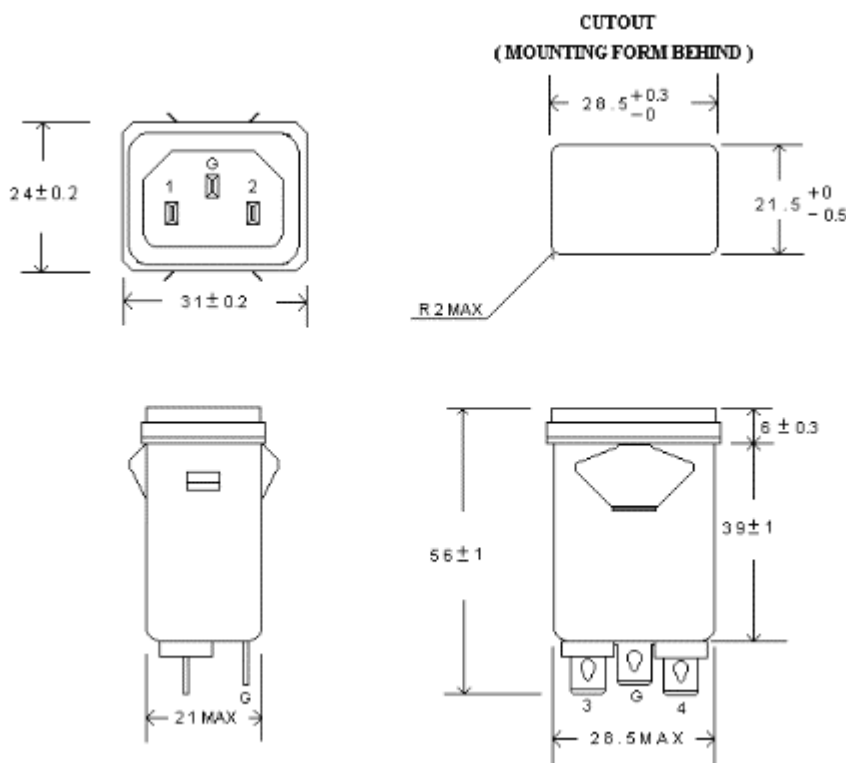
COMMON MODE (LINE TO GROUND) IN 50 OHM SYSTEM							
TYPE	CURRENT RATING	FREQUENCY-MHZ					
		0.15	0.5	1.0	5.0	10.0	30.0
YO01A1/YO01A3	1A	26	35	39	37	38	41
YO03A1/YO03A3	3A	21	30	36	38	39	45
YO06A1/YO06A3	6A	13	21	27	38	41	42
YO10A1/YO10A3	10A	6	13	18	31	37	44
DIFFERENTIAL MODE (LINE TO LINE) IN 50 OHM SYSTEM							
YO01A1/YO01A3	1A	8	17	22	37	39	39
YO03A1/YO03A3	3A	7	17	21	39	38	36
YO06A1/YO06A3	6A	6	16	21	38	41	40
YO10A1/YO10A3	10A	4	13	18	32	45	39

4. CIRCUIT



5. DIMENSION(mm)

YO01A1~YO10A1



YO01A3~YO10A3

