

# YUNPEN USA

## YN-T9L2 SERIES

### 1. FEATURES

- Direct Pc board mounting
- Two stage filter designed to provide high performance in suppressing both line-to-line and line-to-ground noise
- All parts are approved by **UL, CSA, VDE, and SEMKO**



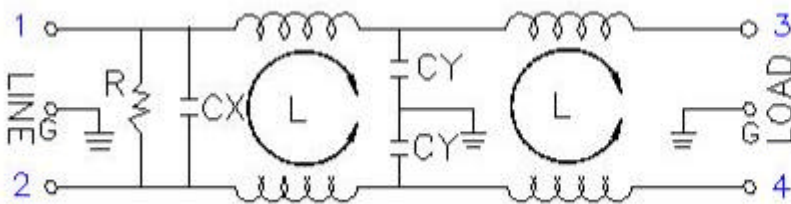
### 2. SPECIFICATIONS

ITEM \ MODEL		YN02T9L2
RATED VOLTAGE		250V AC
RATED CURRENT		2A
LEAKAGE CURRENT		2mA MAX 250V,50HZ
TEST VOLTAGE	LINE TO LINE	1450V DC
	LINE TO GROUND	2250V DC
INSULATION RESISTANCE		100M ohm MIN 250VDC
DIRECT CURRENT RESISTANCE		0.3 ohm MAX
TEMPERATURE RISE		30C MAX
OPERATING TEMPERATURE		-25 ~ +85C
ATTENUATION	NORMAL MODE 25 db	0.20 ~ 50MHZ
	MIN COMMON MODE 25 db MIN	0.10 ~ 50MHZ
CX		0.47uF
CY		4700pF*2
INDUCTANCE		(20.0+1.0)mH*2

### 3. NOISE ATTENUATION (dB)

COMMON MODE (LINE TO GROUND) IN 50 OHM SYSTEM							
TYPE	CURRENT RATING	FREQUENCY-MHZ					
		0.15	0.5	1.0	5.0	10.0	30.0
YN02T9L2	2A	25	46	50	58	47	38
DIFFERENTIAL MODE (LINE TO LINE) IN 50 OHM SYSTEM							
YN02T9L2	2A	25	46	50	67	62	48

### 4. CIRCUIT



CX: 0.47uF  
 CY: 4700pF\*2  
 R: 1M OHM  
 L: (20.0+1.0)\*2

### 5. DIMENSION (mm)

YN-T9L2

