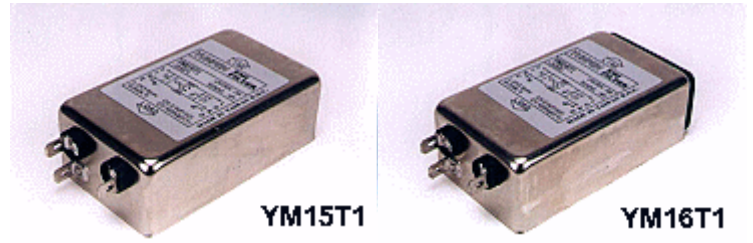


YUNPEN USA

YM15T1, YM16T1 SERIES

1. FEATURES

- General purpose filter providing effective emi suppression of both line-to-line and line-to-ground noise
- 250 Fasten terminals



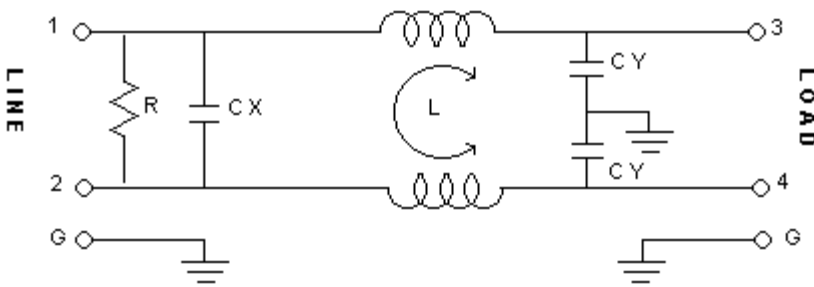
2. SPECIFICATIONS

ITEM \ MODEL		YM15T1	YM16T1
RATED VOLTAGE		250V AC	250V AC
RATED CURRENT		15A	16A
LEAK CURRENT		2.3mA MAX 250V,50HZ	2.3mA MAX 250V,50HZ
TEST VOLTAGE	LINE TO LINE	1450V DC	1450V DC
	LINE TO GROUND	2250V DC	2250V DC
INSULATION RESISTANCE		100M ohm MIN 250VDC	100M ohm MIN 250VDC
DIRECT CURRENT RESISTANCE		0.5 ohm MAX	0.2 ohm MAX
TEMPERATURE RISE		30C MAX	30C MAX
OPERATING TEMPERATURE		-25 ~ +85C	-25 ~ +85C
ATTENUATION	NORMAL MODE 25dbMIN	0.60 ~ 45MHZ	0.80 ~ 50MHZ
	COMMON MODE 25dbMIN	0.10 ~ 40MHZ	0.20 ~ 50MHZ
CX		2uF	2uF
CY		10000pF*2	10000pF*2
INDUCTANCE		3.6mH*2	3.6mH*2

3. NOISE ATTENUATION (dB)

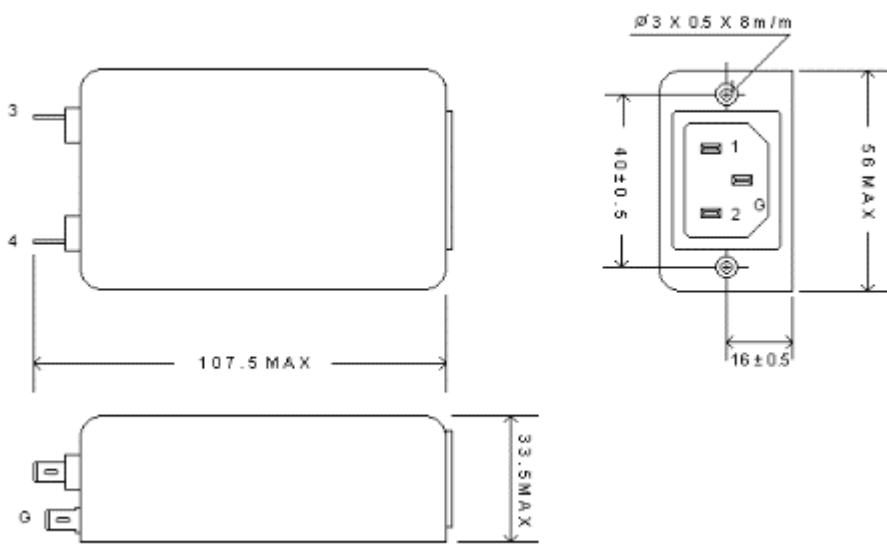
COMMON MODE (LINE TO GROUND) IN 50 OHM SYSTEM							
TYPE	CURRENT	FREQUENCY-MHZ					
	RATING	0.15	0.5	1.0	5.0	10.0	30.0
YM15T1	15A	27	37	40	51	63	42
YM16T1	16A	29	38	39	45	52	21
DIFFERENTIAL MODE (LINE TO LINE) IN 50 OHM SYSTEM							
YM15T1	15A	27	39	42	59	53	41
YM16T1	16A	28	39	44	48	49	28

4. CIRCUIT



5. DIMENSION(mm)

YM15T1



YM16T1

