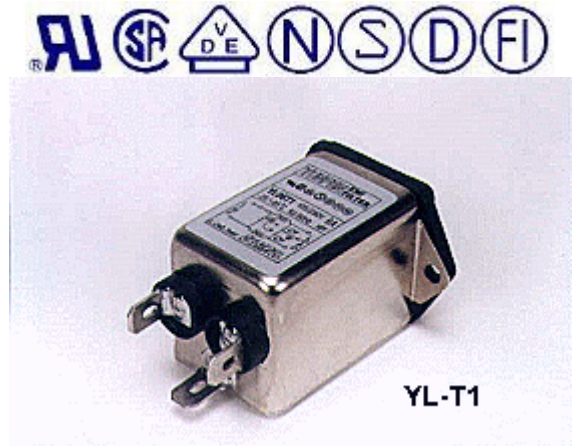


# YUNPEN USA

## YL-T1 SERIES

### 1. FEATURES

- General purpose filter with a fuse holder providing effective emi suppression of both line-to-line and line-to-ground noise.
- 250 Fasten terminals
- All parts are approved by **UL, CSA, VDE, SEMKO, NEMKO, DEMKO** and **FIMKO**



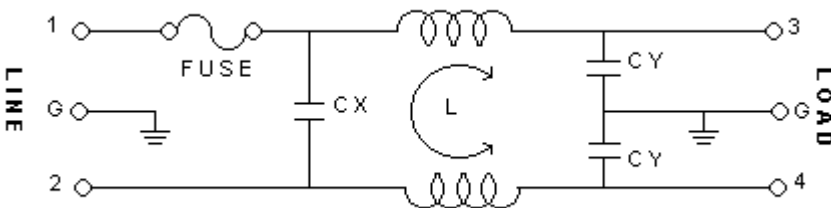
### 2. SPECIFICATIONS

ITEM \ MODEL		YL01T1	YL03T1	YL06T1	YL10T1
RATED VOLTAGE		250V AC	250V AC	250V AC	250V AC
RATED CURRENT		1A	3A	6A	10A
LEAK CURRENT		0.8mA MAX 250V,50HZ	0.8mA MAX 250V,50HZ	0.8mA MAX 250V,50HZ	0.8mA MAX 250V,50HZ
TEST VOLTAGE	LINE TO LINE	1450V DC	1450V DC	1450V DC	1450V DC
	LINE TO GROUND	2250V DC	2250V DC	2250V DC	2250V DC
INSULATION RESISTANCE		100M ohm MIN 250VDC	100M ohm MIN 250VDC	100M ohm MIN 250VDC	100M ohm MIN 250VDC
DIRECT CURRENT RESISTANCE		0.5 ohm MAX	0.2 ohm MAX	0.15 ohm MAX	0.1 ohm MAX
TEMPERATURE RISE		30C MAX	30C MAX	30C MAX	30C MAX
OPERATING TEMPERATURE		-25 ~ +85C	-25 ~ +85C	-25 ~ +85C	-25 ~ +85C
ATTENUATION	NORMAL MODE 25dbMIN	0.40 ~ 50MHZ	0.50 ~ 50MHZ	0.80 ~ 40MHZ	1.20 ~ 50MHZ
	COMMON MODE 25dbMIN	0.10 ~ 45MHZ	0.13 ~ 50MHZ	0.50 ~ 47MHZ	1.50 ~ 50MHZ
CX		0.1uF	0.1uF	0.1uF	0.1uF
CY		3300pF*2	3300pF*2	3300pF*2	3300pF*2
INDUCTANCE		3.7mH*2	1.8mH*2	0.7mH*2	0.3mH*2

### 3. NOISE ATTENUATION (dB)

COMMON MODE (LINE TO GROUND) IN 50 OHM SYSTEM							
TYPE	CURRENT RATING	FREQUENCY-MHZ					
		0.15	0.5	1.0	5.0	10.0	30.0
YL01T1	1A	28	39	41	37	38	23
YL03T1	3A	21	28	33	38	39	48
YL06T1	6A	13	22	28	44	46	49
YL10T1	10A	6	15	21	33	39	38
DIFFERENTIAL MODE (LINE TO LINE) IN 50 OHM SYSTEM							
YL01T1	1A	8	19	28	42	42	28
YL03T1	3A	11	21	23	43	45	47
YL06T1	6A	6	16	21	41	44	37
YL10T1	10A	5	14	20	54	44	40

### 4. CIRCUIT



### 5. DIMENSION(mm)

#### YL01T1~YL10T1

