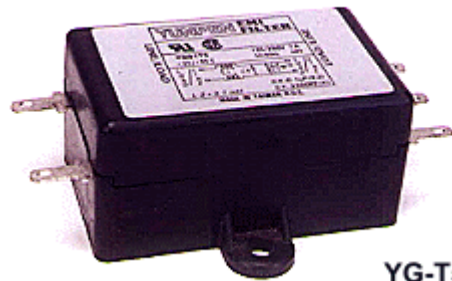


YUNPEN USA

YG-T5 SERIES

1. FEATURES

- Low cost type
- Chassis mount
- All parts are approved by **UL** and **CSA**



YG-T5

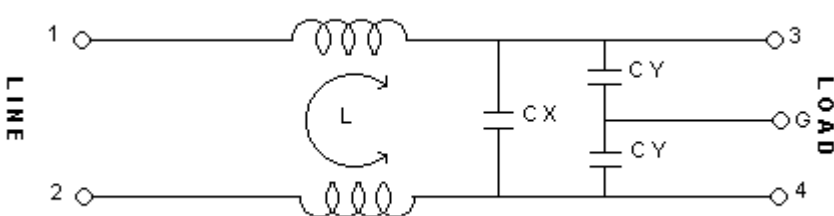
2. SPECIFICATIONS

ITEM \ MODEL		YG01T5	YG03T5	YG06T5	YG10T5
RATED VOLTAGE		250V AC	250V AC	250V AC	250V AC
RATED CURRENT		1A	3A	6A	10A
LEAK CURRENT		0.8mA MAX 250V,50HZ	0.8mA MAX 250V,50HZ	0.8mA MAX 250V,50HZ	0.8mA MAX 250V,50HZ
TEST VOLTAGE	LINE TO LINE	1450V DC	1450V DC	1450V DC	1450V DC
	LINE TO GROUND	2250V DC	2250V DC	2250V DC	2250V DC
INSULATION RESISTANCE		100M ohm MIN 250VDC	100M ohm MIN 250VDC	100M ohm MIN 250VDC	100M ohm MIN 250VDC
DIRECT CURRENT RESISTANCE		0.5 ohm MAX	0.2 ohm MAX	0.15 ohm MAX	0.1 ohm MAX
TEMPERATURE RISE		30C MAX	30C MAX	30C MAX	30C MAX
OPERATING TEMPERATURE		-25 ~ +85C	-25 ~ +85C	-25 ~ +85C	-25 ~ +85C
ATTENUATION	NORMAL MODE 25dbMIN	0.40 ~ 48MHZ	0.60 ~ 50MHZ	0.90 ~ 50MHZ	1.00 ~ 50MHZ
	COMMON MODE 25dbMIN	0.10 ~ 40MHZ	0.13 ~ 40MHZ	0.60 ~ 50MHZ	2.00 ~ 50MHZ
CX		0.1uF	0.1uF	0.1uF	0.1uF
CY		3300pF*2	3300pF*2	3300pF*2	3300pF*2
INDUCTANCE		3.7mH*2	1.8mH*2	0.7mH*2	0.3mH*2

3. NOISE ATTENUATION (dB)

COMMON MODE (LINE TO GROUND) IN 50 OHM SYSTEM							
TYPE	CURRENT RATING	FREQUENCY-MHZ					
		0.15	0.5	1.0	5.0	10.0	30.0
YG01T5	1A	25	37	42	41	43	26
YG03T5	3A	21	31	38	37	40	27
YG06T5	6A	13	18	23	37	43	34
YG10T5	10A	6	14	21	33	39	38
DIFFERENTIAL MODE (LINE TO LINE) IN 50 OHM SYSTEM							
YG01T5	1A	4	15	23	37	35	35
YG03T5	3A	8	20	29	37	44	32
YG06T5	6A	7	16	22	39	48	50
YG10T5	10A	5	14	21	34	42	38

4. CIRCUIT



5. DIMENSION(mm)

YG01T5~YG10T5

