

YUNPEN USA

YC-T1L2, YD-T4L2 SERIES

1. FEATURES

- Two stage filters designed to provide high performance in suppressing both line-to-line and line-to-ground noise for most digital electronic equipment
- 250 Fasten terminals (YC-T1L2)
- Screw output terminals M-4. (YD-T4L2)
- All parts of YC-T1L2 are approved by **UL** and **CSA** EXCEPT YC10T1L2
- All parts of YD-T4L2 are approved by **UL**, **CSA** and **VDE** EXCEPT YD10T1L2



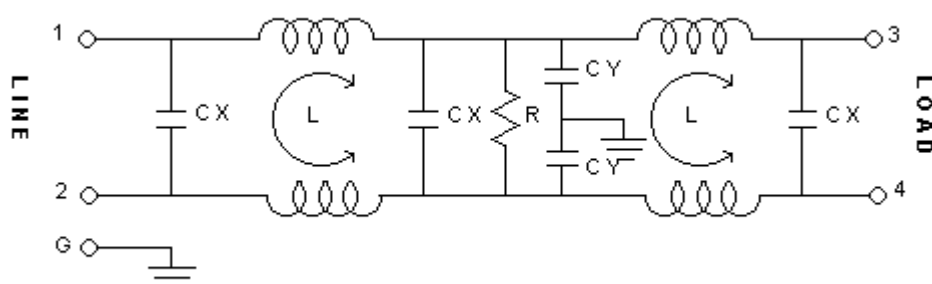
2. SPECIFICATIONS (dB)

ITEM \ MODEL	YC01T1L2/YD01T4L2	YC03T1L2/YD03T4L2	YC06T1L2/YD06T4L2	YC10T1L2/YD10T4L2
RATED VOLTAGE	250V AC	250V AC	250V AC	250V AC
RATED CURRENT	1A	3A	6A	10A
LEAK CURRENT	0.8mA MAX 250V,50HZ	0.8mA MAX 250V,50HZ	0.8mA MAX 250V,50HZ	0.8mA MAX 250V,50HZ
TEST VOLTAGE	LINE TO LINE	1450V DC	1450V DC	1450V DC
	LINE TO GROUND	2250V DC	2250V DC	2250V DC
INSULATION RESISTANCE	100M ohm MIN 250VDC	100M ohm MIN 250VDC	100M ohm MIN 250VDC	100M ohm MIN 250VDC
DIRECT CURRENT RESISTANCE	0.7 ohm MAX	0.3 ohm MAX	0.15 ohm MAX	0.1 ohm MAX
TEMPERATURE RISE	30C MAX	30C MAX	30C MAX	30C MAX
OPERATING TEMPERATURE	-25 ~ +85C	-25 ~ +85C	-25 ~ +85C	-25 ~ +85C
ATTENUATION	NORMAL MODE 25dbMIN	0.25 ~ 15MHZ	0.40 ~ 28MHZ	0.60 ~ 30MHZ
	COMMON MODE 25dbMIN	0.10 ~ 15MHZ	0.18 ~ 22MHZ	0.40 ~ 25MHZ
CX	0.1uF*3	0.1uF*3	0.1uF*3	0.1uF*3
CY	3300pF*4	3300pF*4	3300pF*4	3300pF*4
INDUCTANCE	3.7mH*4	1.8mH*4	0.7mH*4	0.3mH*4

3. NOISE ATTENUATION

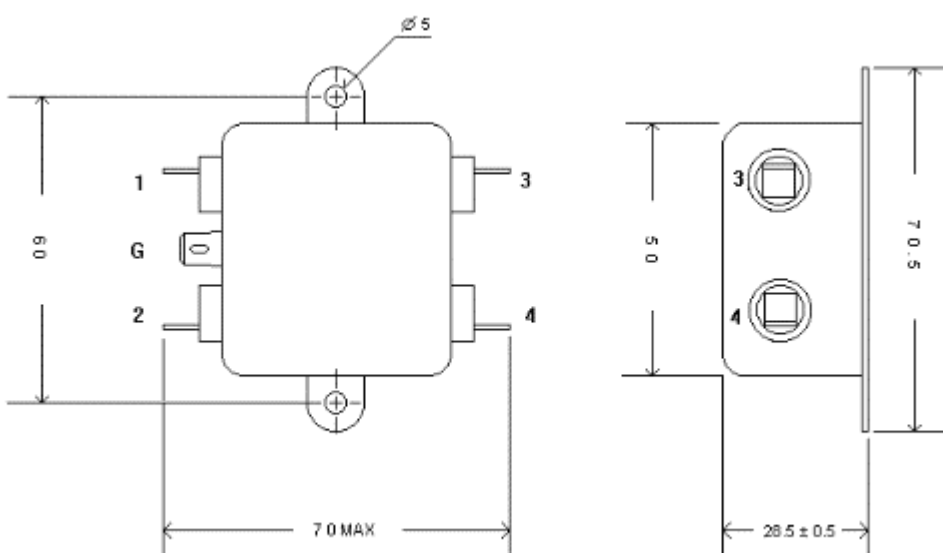
COMMON MODE (LINE TO GROUND) IN 50 OHM SYSTEM							
TYPE	CURRENT RATING	FREQUENCY-MHZ					
		0.15	0.5	1.0	5.0	10.0	30.0
YC01T1L2/YD01T4L2	1A	46	74	73	58	51	27
YC03T1L2/YD03T4L2	3A	38	68	80	58	53	48
YC06T1L2/YD06T4L2	6A	21	51	62	66	69	51
YC10T1L2/YD10T4L2	10A	4	32	50	66	58	48
DIFFERENTIAL MODE (LINE TO LINE) IN 50 OHM SYSTEM							
YC01T1L2/YD01T4L2	1A	7	52	46	54	47	32
YC03T1L2/YD03T4L2	3A	5	53	62	51	44	38
YC06T1L2/YD06T4L2	6A	15	30	75	55	49	41
YC10T1L2/YD10T4L2	10A	6	18	54	55	48	41

4. CIRCUIT



5. DIMENSION (mm)

YC01T1L2~YC10T1L2



YD01T4L2~YD10T4L2

