

YUNPEN USA

YAC-T1, YAC-T3 SERIES

1. FEATURES

- General purpose filter with IEC Connector providing effective line-to-ground noise up to 10 amp., 250VAC
- Low cost
- Compact design
- 250 Fasten terminals (YAC-T1)
- Solder lug terminals (YAC-T3)
- All parts are approved by **UL, CSA and VDE**



YAC-T1



YAC-T3

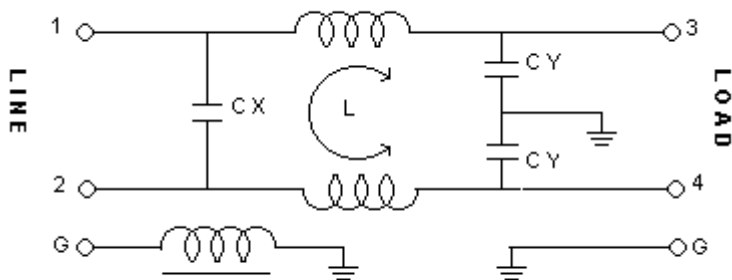
2. SPECIFICATIONS

ITEM \ MODEL	YAC01T1/YAC01T3	YAC03T1/YAC03T3	YAC06T1/YAC06T3	YAC10T1/YAC10T3
RATED VOLTAGE	250V AC	250V AC	250V AC	250V AC
RATED CURRENT	1A	3A	6A	10A
LEAK CURRENT	0.8mA MAX 250V,50HZ	0.8mA MAX 250V,50HZ	0.8mA MAX 250V,50HZ	0.8mA MAX 250V,50HZ
TEST VOLTAGE	LINE TO LINE	1450V DC	1450V DC	1450V DC
	LINE TO GROUND	2250V DC	2250V DC	2250V DC
INSULATION RESISTANCE	100M ohm MIN 250VDC	100M ohm MIN 250VDC	100M ohm MIN 250VDC	100M ohm 50VDC
DIRECT CURRENT RESISTANCE	0.5 ohm MAX	0.2 ohm MAX	0.15 ohm MAX	0.1 ohm MAX
TEMPERATURE RISE	30C MAX	30C MAX	30C MAX	30C MAX
OPERATING TEMPERATURE	-25 ~ +85C	-25 ~ +85C	-25 ~ +85C	-25 ~ +85C
ATTENUATION	NORMAL MODE 25dbMIN	0.60 ~ 45MHZ	0.80 ~ 50MHZ	1.00 ~ 50MHZ
	COMMON MODE 25dbMIN	0.10 ~ 40MHZ	0.20 ~ 50MHZ	1.00 ~ 50MHZ

3. NOISE ATTENUATION (dB)

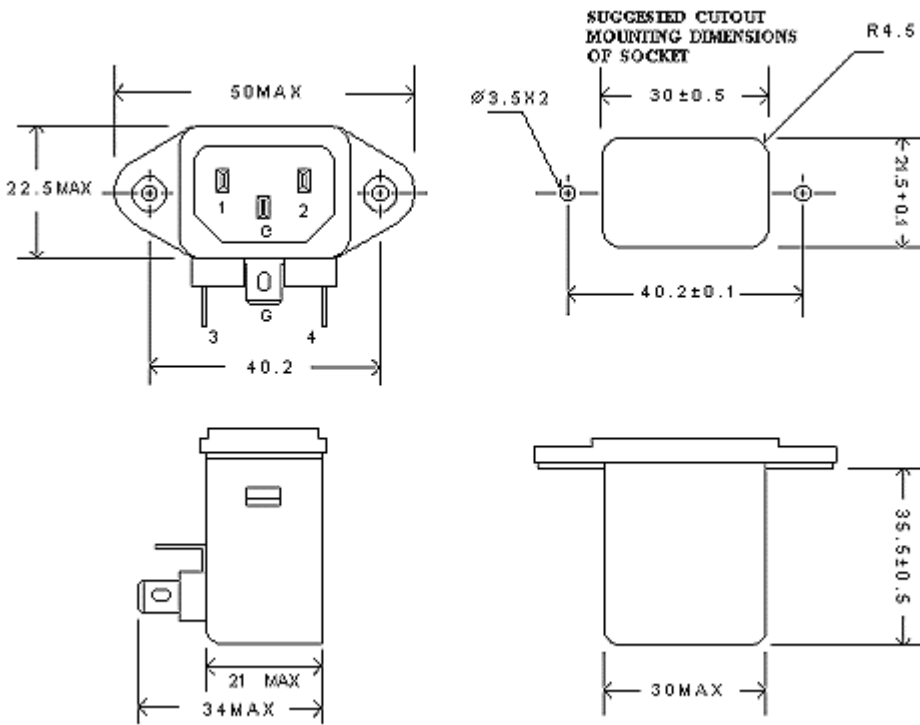
COMMON MODE (LINE TO GROUND) IN 50 OHM SYSTEM							
TYPE	CURRENT RATING	FREQUENCY-MHZ					
		0.15	0.5	1.0	5.0	10.0	30.0
YAC01T1/YAC01T3	1A	26	37	42	41	37	21
YAC03T1/YAC03T3	3A	21	30	36	42	37	22
YAC06T1/YAC06T3	6A	13	21	26	41	42	26
YAC10T1/YAC10T3	10A	5	14	19	34	41	26
DIFFERENTIAL MODE (LINE TO LINE) IN 50 OHM SYSTEM							
YAC01T1/YAC01T3	1A	7	17	24	42	39	27
YAC03T1/YAC03T3	3A	8	18	23	43	40	27
YAC06T1/YAC06T3	6A	5	16	21	38	41	34
YAC10T1/YAC10T3	10A	4	13	19	31	38	31

4. CIRCUIT



5. DIMENSION (mm)

YAC01T1~YAC10T1



YAC01T3~YAC10T3

